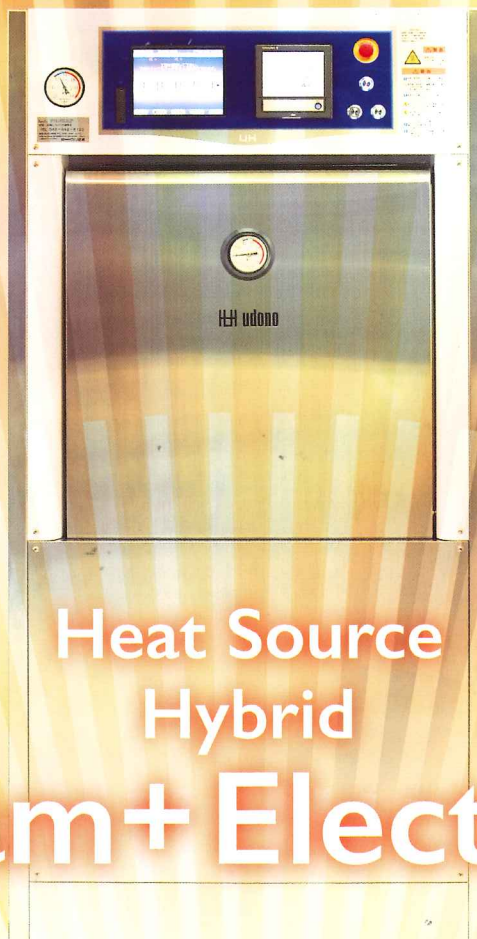


Heat source hybrid

Steam generator built-in
High-pressure steam sterilizer

UH SERIES



Heat Source
Hybrid
Steam+Electrical

udono sterilization system


udono limited

U H SERIES

The roots of UDONO

Returning to the starting points,
Inheriting DNA from founder of our company,
Hirohisa Udono,
Here we launch heat source hybrid sterilizer



Throughout the ages Heat source hybrid



+



Heat source hybrid

Steam supply from boiler by day time
Electric source steam supply during night
at a stop of boiler

Switching to power mode, heating time speed-up.

Power mode switch on !!

Steam source + Electric source in a busy morning

Also selectable "Electric steam generator built-in sterilizer"

- Conserving space without having to equip boiler
Building cost saving because neither gas nor exhaust piping is not needed.
- Operational promptly in out of hour.
- Supplied high quality steam,
free from the influence of decrepit boiler and steam piping line.
- Low maintenance cost;
periodic check of boiler...
- Large capacity 730 L is available
in electric steam generator type.

UH68

Voice guidance function



Easy operation for unexperienced staff with voice guidance, which notify the current state of process during the work.
"Be careful, Door's closing."
"Door's opening."
"Caution, it's hot."
"Please select the operating program."
"Checking the display, press start switch."
"Operation has started."
"Now in a holding time."
"Soon to be completed."
"Completed in a normal cycle."
"Completed in an abnormal cycle, please check."
"Unloading is completed."
*Voice guidance function off is also selectable.

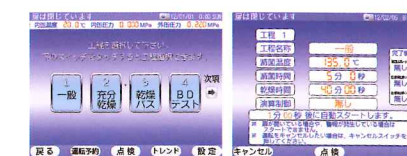
User friendly

Operate reservation function: setting day of the week and time

It makes it possible to turn on the power and start the operation including Bowie-Dick Test, which skip pre-heating process before sterilization. Three modes are selectable.
Power on & Starting cycle mode
Power on mode ; Supplying steam into jacket
Starting mode ; Appointing a starting time in power on.
Number of run is selectable from "only 1 time" or "continuous use".

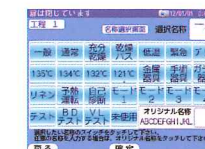
Operational performance

High quality touch panel.



Original process name

Setting user's original process name (Display in English)



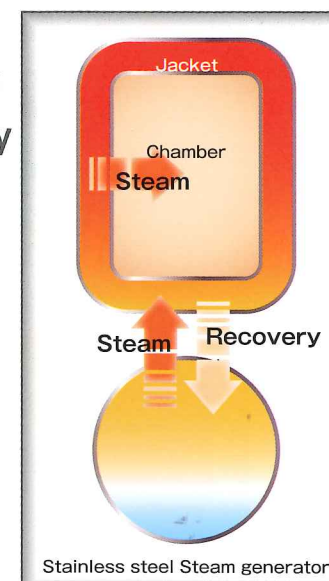
Brand new drying system as it is

Everything made from stainless-steel
Not only durability but also high-quality steam can be supplied.

Stainless steel for both chamber and jacket, which makes it possible to gather drain in Steam in jacket and provide high-quality steam in chamber.
Collected drain in jacket is reused for stainless-steel steam generator.

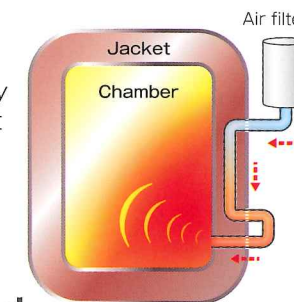
Allowing 0.3MPa high pressure

Increasing temperature in jacket creates heat, which leads drying efficiency.
Selectable from RO cartridge built-in type or RO supply type.



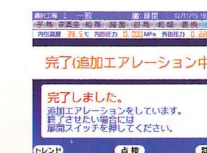
New drying system

Drying efficiency by not directly taking clean air to chamber but through heated jacket.
It is also useful for drying efficiency.



Automatic-additional drying process · cooling function

(Automatic-additional drying process)
In a certain period of time without door-opening/closing, after the cycle is completed, it starts additional drying process.
Remaining the heat in jacket, blowing clean air facilitate drying materials.
(Automatic cooling function)
Stopping the heat in jacket, automatic aeration function intended to cool sterilized materials is also selectable.
Power off for eco-saving or stand by mode after the work are also selectable.



Excellent monitoring function

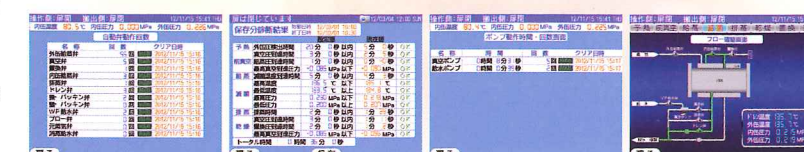
Collecting the data

Built-in flash memory stores records up to 8000 hours of work.
Inputting date & time, work can be graphically displayed.
Moving the cursor on the graph, it shows the temperature and pressure value on the point.
Option Connecting PC, maximum 10 units can be monitored.



Maintenance

In addition to self-diagnosis function, counting function of control parts is equipped.
We offer an evidence-based maintenance by accurate understanding of parts state such as valve opening/closing history or work time of pump.



Loading(Placing) method of sterilized materials

55/68
type

Shelves (Model code:T2)

Sterilized materials are loaded to the shelves
plate attached in chamber.

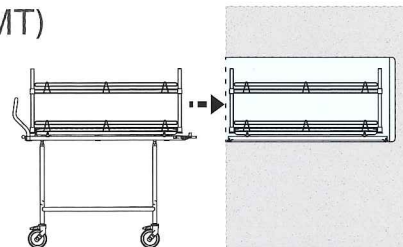
"Double-banked shelves plate" is standard of 55/68 type.
With preventing -drop function and removable



55/68
type

Trolley and loading rack -style(Model code:MT)

Excellent design for load bearing in stainless-steel wire
Resist rust,without interrupting the flow of steam



Specification Description	Chamber size(mm)			Capacity (Little)	Door		Slide	Overall Dimention(mm)				Required Facilities						Power			
	Width	Height	Depth		Single	Double		Width	Height	Depth		Required facilities Steam pipe dia. *1	Required quantity of Steam (kg/hr)	RO WATER *2		Water supply			Drain/ Exhaust pipe dia.		
										Single	Double			Pipe dia.	L/min	Pipe	L/min				
UH55-U7-S	500	550	700	196	○	×	Vertically	850 (950)	1800	1200	—	20A	60	15A	3	20A	11	40A	AC380V 3 phases		
UH55-U10-※			1000	280	○	○				1500	1310										
UH68-U7-S	660	680	700	320	○	×		920 (1020)	1850	1200	—						13				
UH68-U10-※			1000	460	○	○				1500	1310										
UH68-U13-※			1300	600	○	○				1800	1610						15				
UH68-U16-※			1600	730	○	○				2100	1910										

Large capacity in spite of electric type

() Cabinet

*1 Hybrid type *2 RO water supply *3 Capacity of Breaker

Description of Item

UH68-U13H-S-MT/RO

Chamber size
(Width/Height)

Slide

E: Electric
heater type
H: Hybrid type

T2:Shelves
MT:trolley and
loading rack style

Chamber size
(Depth)

S:Single
D:Double
C:Cabinet

NO MARK:RO Cartridge built-in
Required 100V
R/O: RO water supply



UH55



UH68



本社・植原工場認証取得

udono limited

<http://www.udono.com> E-mail:sales@udono.com



Head Office

2-1-9 Motoyokoyama-Cho Hachioji-Shi, 192-0063, Japan

Tel : +81-42-642-6153 Fax : +81-42-642-4784